

2

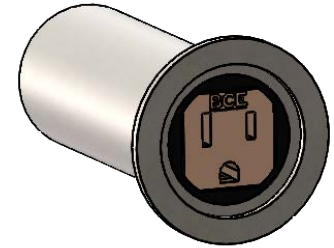
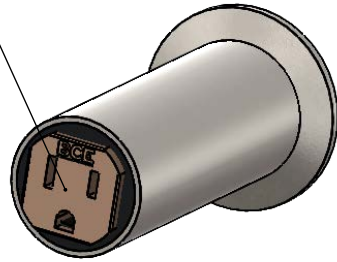
1

Three Slot, Female, Grounded, 125V AC

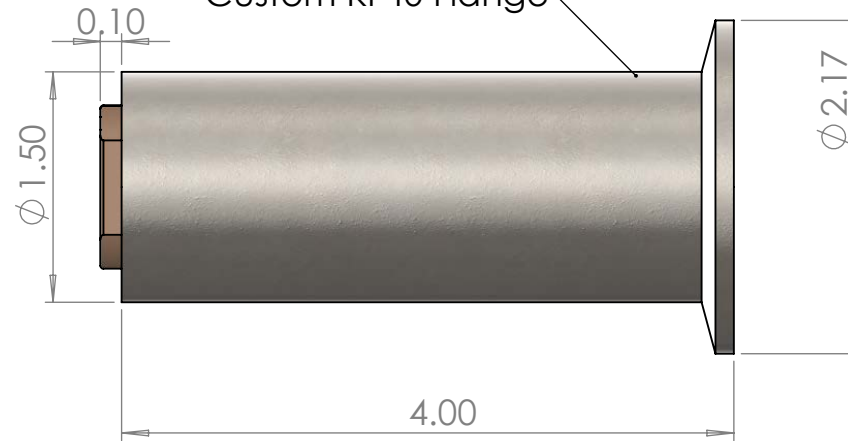
B

B

ISOMETRIC VIEW
FOR REF. ONLY



Custom KF40 Flange



NOTES

1. 125V, 15A ELECTRICAL FEEDTHROUGH
2. 80 C Continuous Operating Temp
3. Vacuum Rating: 10^{-5}

A

A

UNLESS OTHERWISE SPECIFIED:

DIMENSIONS ARE IN INCHES
 TOLERANCES:
 FRACTIONAL ±
 ANGULAR: MACH ± BEND ±
 TWO PLACE DECIMAL ± .010
 THREE PLACE DECIMAL ± .005

INTERPRET GEOMETRIC TOLERANCING PER:

MATERIAL SEE DWG

FINISH N/A

DO NOT SCALE DRAWING



TITLE:

120V SOCKET
VACUUM FEEDTHROUGH

SIZE **A**

DWG. NO. BCEXXXXX

REV **A**

SCALE: NTS WEIGHT: N/A

SHEET 1 OF 1

PROPRIETARY AND CONFIDENTIAL

THE INFORMATION CONTAINED IN THIS DRAWING IS THE SOLE PROPERTY OF BELLOVE CO. ENGINEERS. ANY REPRODUCTION IN PART OR AS A WHOLE WITHOUT THE WRITTEN PERMISSION OF BELLOVE CO. ENGINEERS IS PROHIBITED.

2

1